

20

ANIVERSARIO

SHORT SEA PROMOTION
CENTRE SPAIN



2022



European Shortsea Network

WHAT IS SHORT SEA SHIPPING? (SSS)

The EU laid down in COM (1999) 317 the final definition of SSS. Specifically the EU states that *Short Sea Shipping means the movement of cargo and passengers by sea between ports situated in geographical Europe or between those ports and ports situated in non European countries having a coastline on the enclosed seas bordering Europe.*



WHY PROMOTE SHORTSEA SHIPPING?



Transport by inland waterways and short sea shipping will increase by 25% **by 2030**.

To provide the necessary coverage for road freight transport companies, since the **EU Mobility Strategy 2021** sets by 2030 a 25% target of inland waterways and shortsea shipping increase.

Multimodal transport needs a strong boost. This highlights the efficiency of the transportation system. As a matter of priority, a substantial part of the 75% of inland freight transport now carried out by road must switch to rail and inland waterways.



EUROPEAN CLIMATE LAW (June 30, 2021)

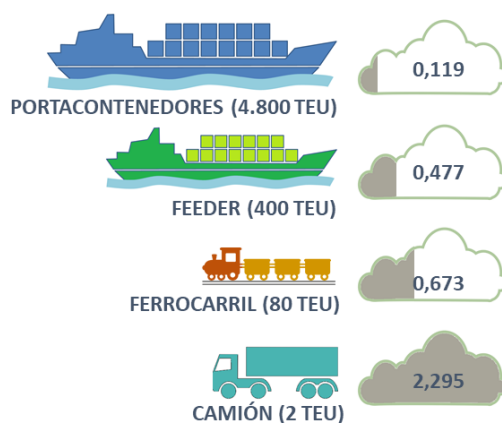
New goal for 2030 to reduce greenhouse gas emissions: at least 55% net.



ENVIROMENTAL BENEFITS

- Reduction in fuel consumption per ton-km
- Reduction of CO2 emissions per ton-km gr
- Reduced infrastructures congestion
- Reduction of **external cost**: congestion, noise, environmental, ...
- Increased **capacity for growth**

EMISIONES Kg/TEU-Km



MOTORWAYS OF THE SEA CONCEPT

Concept first introduced by the European Commission in the White Paper of Transport 2001 with twin objectives:

- Improve the road traffic conditions in European networks, reducing the tons-km shipped by road vehicles, getting them into Ro-Ro ships.
- Improve freight accessibility of peripheral regions and islands.

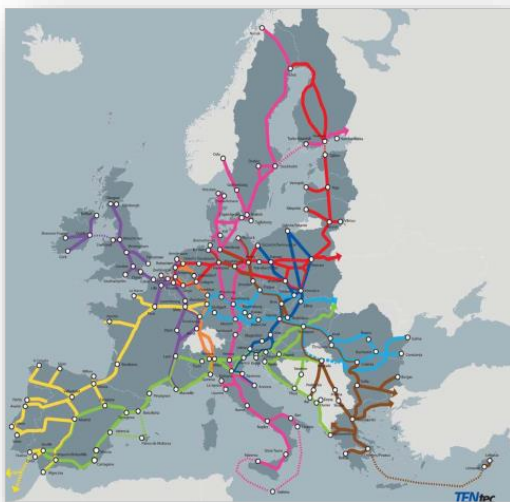
A Motorway of the Sea is a **High Quality Short Sea Shipping** service:

- **High level of safety and reliability of service** (comparable to an inland highway).
- **High frequency, three weekly departures**
- **Transit time like road transport.**
- **High transport capacity.**
- **Excellent connection to TEN-T. MoS are recognized as part of TEN-T.**



TEN-T NETWORK

The **Trans-European Transport Network (TEN-T)** establishes 30 priority projects that European Union considers as strategic for the creation of a new transport infrastructure policy that connects the continent between East and West, North and South.



The Motorways of the Sea are the priority project #21, facilitating access to funding mechanisms and encouraging coordination of member states.

The Motorways of the Sea priority are:

- **Baltic Sea**
- **Atlantic Area**
- **Southeast Europe**
- **Western Mediterranean**

The **9 corridors of the basic network** are multimodal and include, if applicable, **Motorways of the Sea.**

SHORT SEA SHIPPING BENEFITS FOR THEIR USERS

- 🚢 **Reduces dependence** on land transport infrastructure ✓
- 🚢 **Lower transport costs** ✓
- 🚢 **Lower fuel costs influence** ✓
- 🚢 **Shortest transit time** (minimizes impact of driving and rest times regulation) ✓
- 🚢 **Avoids congestion** and bottlenecks ✓
- 🚢 **Avoids traffic restrictions** ✓
- 🚢 **Increases security**, reduces risk of theft ✓
- 🚢 **Avoids penalties** ✓
- 🚢 **Increases load** per unit ✓
- 🚢 **Improves drivers' quality** of life ✓

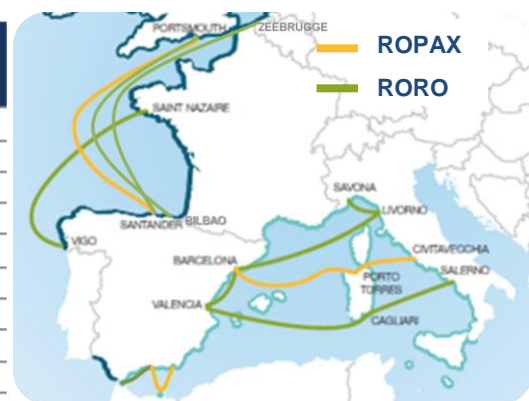
SSS SUPPORT INITIATIVES IN EUROPEAN UNION AND SPAIN

- 🚢 Creation of **SHORT SEA PROMOTION CENTRES**: Since the beginning of the 2000s most European countries have these centers: the SPCs.
- 🚢 Marco Polo I and II programs, has allowed the implantation of many SSS services since its launch in 2003 to 2013.
- 🚢 In 2003 the European Commission included in the **Trans-European Network (TEN-T)** the concept of Motorways of the Sea, making its development a priority project within the transport policy of the European Union and establishing financing for their development.
- 🚢 In 2014, the new instrument "**Connecting Europe Facility**" has been launched from the European Union to promote financial aid for the development of Trans – European Network (EU Regulation 1316/2013), including MoS as one of the horizontal priorities.
- 🚢 In **Spain, the Ports Law (R. D. L. 2/2011)** specifically considers the special conditions of regular SSS services, giving a favorable tariff treatment to SSS and MoS.
- 🚢 There are different economic support initiatives with state funds, such as: Spanish-French's Motorways of the Sea, Ecobono/Marebonus in Italy, Norway and Sweden, etc.



MOTORWAYS OF THE SEA IN SPAIN

	ORIGIN / DESTINATION	SHIPPING COMPANY	TRANSIT TIME	WEEKLY DEPARTURES
ATLANTIC SEABOARD	VIGO-ST. NAZAIRE	FLOTA SUARDIAZ	35h	4
	SANTANDER – PORTSMOUTH	BRITTANY FERRIES	24h	3
	BILBAO-PORTSMOUTH	BRITTANY FERRIES	22,5h	3
	SANTANDER - ZEEBRUGGE	CLdN	50 h	3
MEDITERRANEAN SEABOARD	BARCELONA-PORTO TORRES-CIVITAVECCHIA	GRIMALDI	12/20h	6
	VALENCIA-BARCELONA-LIVORNO-SAVONA	GRIMALDI	36/51-20/35h	6
	VALENCIA-CAGLIARI-SALERNO	GRIMALDI	26/45h	3
	ALMERÍA-NADOR	TRASMED.- N. ARMAS	6 h	7
	MOTRIL-NADOR	TRASMED.- N. ARMAS	7h	5
	MOTRIL-TANGER MED (suspended for COVID)	FRS IBERIA	7h	7



Check the [SSS Services](#) available in Spain on our website!!!

SHORTSEA PROMOTION CENTRE SPAIN

Created in 2002 with the goal of facilitating the development of a sustainable logistics alternative, based on competitive multimodal transport chains, with significant participation of maritime transportation in cooperation with the road in Spain. Its **core objectives and activities** are:

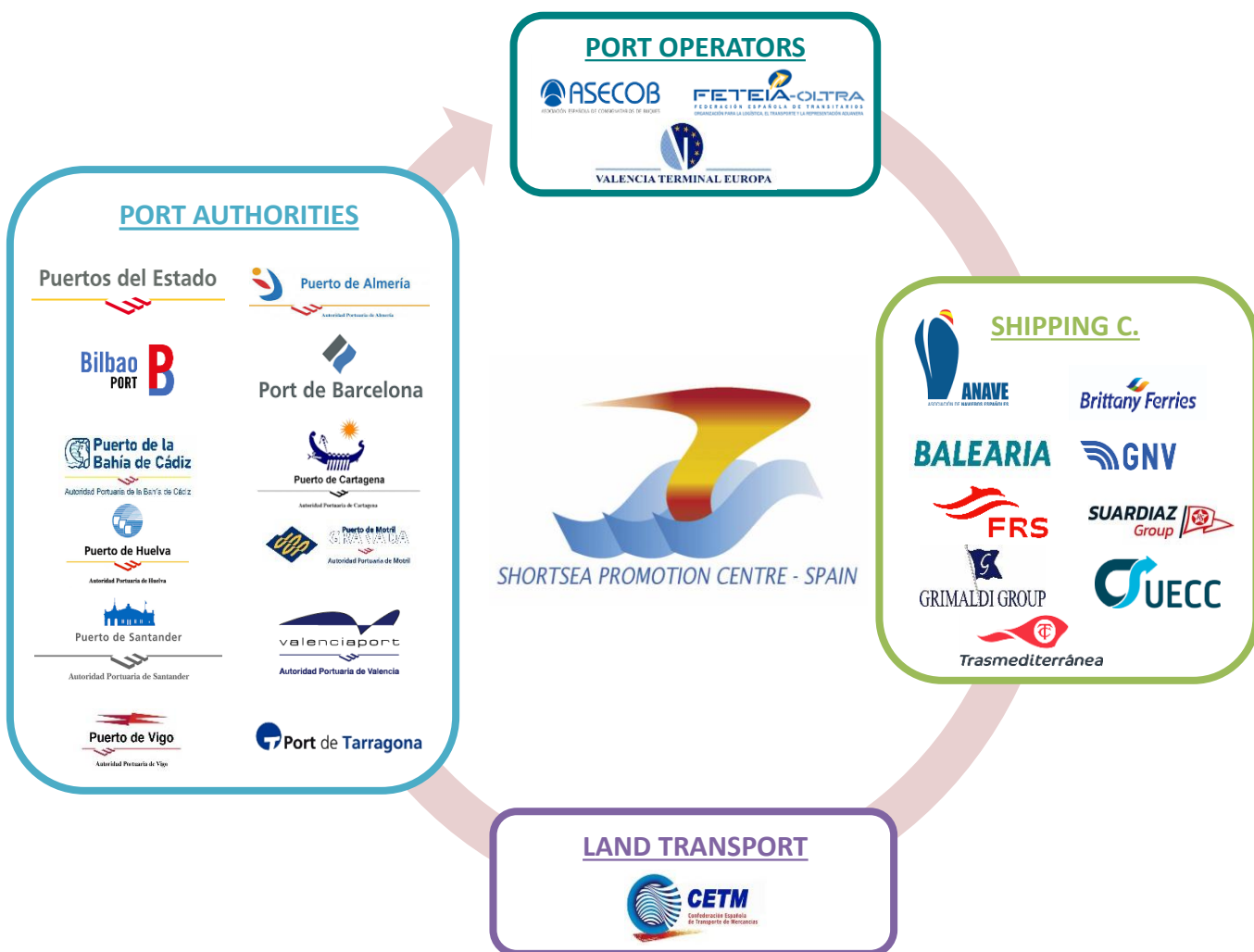


- 🔑 **Educate shippers and, especially, operators** on the possibilities and advantages of the SSS.
- 🔑 **Collect and provide information** on available and potential services of SSS with Spain.
- 🔑 **Identify and analyze problems or obstacles** that may affect the competitiveness of SSS.
- 🔑 **Provide reports and analysis** to companies and public bodies.
- 🔑 **Promote strategic alliances** between operators in the transport chain with a multimodal perspective of short sea transportation.
- 🔑 **Reinforcing the complementarity between maritime and land modes**, particularly road transport, when setting the transport chain.

SPC SPAIN: A MEETING AND DISCUSSION FORUM

The Association and its members wish to give a clear message about the **complementarity, integrity and reliability of Short Sea Shipping services**, and the mutual respect among the key players of the multimodal chain.

Ship-owners, shippers, road haulers, ship agents, freight forwarders, shipping operators, etc. all transport agents have the **opportunity to contribute to a common interest**: a multimodal alternative and sustainable transport and an opportunity of business in the European and international scene.



SPC SPAIN AND THE GENERATION OF KNOWLEDGE

Training Courses

The development of the Short Sea Shipping requires essential collaboration of the road transport sector, since it also focuses as an instrument to serve road transport companies.



The Association considers necessary an effort of **training and dissemination** about short sea shipping contributions to the road sector disseminating the benefits offered, how to access it, how to use it, advantages offered to the driver, etc.

Thanks to the **training aid granted by Directorate General of Land Transport**, the Association organizes training sessions for:

- 📌 **SPREAD** Short Sea Shipping benefits to its users.
- 📌 **SHOW** carriers how simple and easy it is to use the Short Sea Shipping and the economic and other benefits reporting.
- 📌 **INTRODUCE** services currently operating in our country.
- 📌 **RESOLVE** doubts, that can arise between the Short Sea Shipping carriers to encourage their use.
- 📌 **DEMONSTRATE** the Short Sea Shipping contribution to improve the social conditions of road transport operators.

Since 2013, **38 training courses** have been provided in logistics platforms and transportation centers of greater relevance throughout the Spanish geography.

More information about
the Training Courses on
www.shortsea.es



SPC SPAIN AND THE GENERATION OF KNOWLEDGE

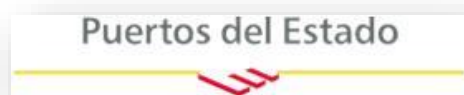
European Institutions

The Association is the only Spanish organization selected to join the [European Sustainable Shipping Forum \(ESSF\)](#), advisory body to the European Commission on implementation of measures to promote sustainable shipping.



Relationship between the Competent Government

The Association maintains close relationships with transport administrations and logistics sector.



Port Services Observatory



G.D. Land Transport
G.D. Merchant Marine



D. Customs



Logistics Forum

Commitment to SUSTAINABILITY

The Association is part of the Platform for the Promotion of Eco fuels. ([Platform for the Bio-Fuels Promotion.](#))



PLATAFORMA
PARA LA PROMOCIÓN
DE LOS
ECOCOMBUSTIBLES

EUROPEAN SHORT SEA NETWORK

The promotion of the SSS on a purely national level is not enough. Promotion and information actions **must be developed in a coordinated manner at both ends of the chain.**

Since 2001, the promotion centers and the European Union have formed the [European Short Sea Network \(ESN\)](#).

SPC-Spain joined the ESN as a full member on March 6, 2002.



European Shortsea Network



The ESN has had
its own legal entity
since 2016

The European Transport Ministers recognized in the signing of the Athens Declaration “**the important role of the European short sea shipping network and its members, the centers of promotion of the SSS**”.

STATISTICAL OBSERVATORY OF THE SHORTSEA SHIPPING IN SPAIN

Objective

Know the evolution and trend of the activity of SSS, both from the point of view of supply and demand, and comparing with road transport, monitoring of its main indicators.

Information Sources

- Traffic statistics of the Port Authorities, provided by the State Ports Public Organism.
- Database of regular Short Distance Maritime Transport services calls, provided by the Port of State and the vessels' characteristics provided by shipping companies.
- Statistics on road freight international transport, provided by the General Directorate of Land Transport of the Ministry of Public Works.

Contents

- The SSS offer in Spain
- The SSS demand in Spain
- Contrast Supply and Demand
- Comparison of ro-ro SSS and road

Two editions per year are published since 2011:

June Edition Statistical Observatory

Annual Statistical Observatory

Available in the SPC's web site:

<http://www.shortsea.es/observatorio-estadistico>

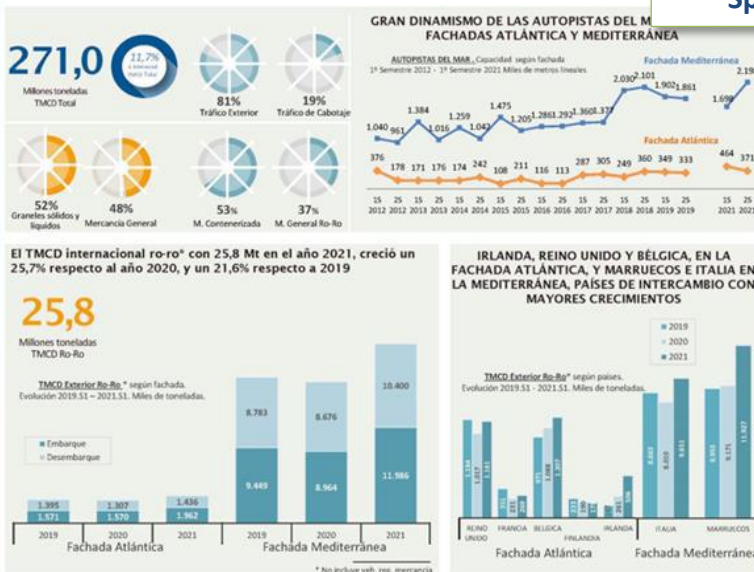
2021

≈ 750.000 trucks decided "board" on a Ro-Ro service connecting Spain with other country

2021 consolida la recuperación del TMCD tras la pandemia

¿Cómo se ha comportado el Transporte Marítimo de Corta Distancia en el primer semestre de este año? ¿Sigue afectando la pandemia a los flujos de carga rodada?

Consulta [Aquí](#) el Informe del Observatorio Estadístico del TMCD en España del año 2021



PROGRAMA E INSCRIPCIONES PRÓXIMAMENTE



Accede al simulador de cadenas de SPC Spain
Averigua cuánto puedes ahorrar utilizando los servicios de TMCD desde puertos españoles



TRANSPORT CHAIN SIMULATOR

Available on the SPC's website:

<http://simulador.shortsea.es/simulador.aspx>



Ayuda/Help

Origen/From:

Zaragoza, España

Destino/To:

Roma, Italia

Toneladas netas de carga/Net tons of cargo:

Parámetros a definir para la cadena de Transporte sólo por carretera

Parameters to be set for the 'only road' transport chain

Euros/Km:

Vel. Media Km/h /Average speed:

Peajes/Tools €:

Parámetros a definir para el tramo terrestre en las cadenas que usan el TMCD

Parameters to be set for the road leg of SSS chains

Euros/Km Acarreo Origen/Origin hauling

Vel. Km/h Acarreo Origen/Origin hauling:

Euros/Km Acarreo Destino/Destination hauling:

Vel. Km/h Acarreo Destino/Destination hauling:

Opciones adicionales para el tramo marítimo en las cadenas que usan el TMCD

Additional options for the maritime leg of SSS chains

(Si no marca ninguna opción, se considera el embarque de semirremolque de carga general)

(If no choice is marked, general cargo semi-trailer will be considered for the shipment)

Mercancías Peligrosas/Dangerous Goods ☐

¿Acompañado?/Accompanied? ☐

Carga refrigerada/Refrigerated cargo ☐

Animales Vivos/Live animals ☐

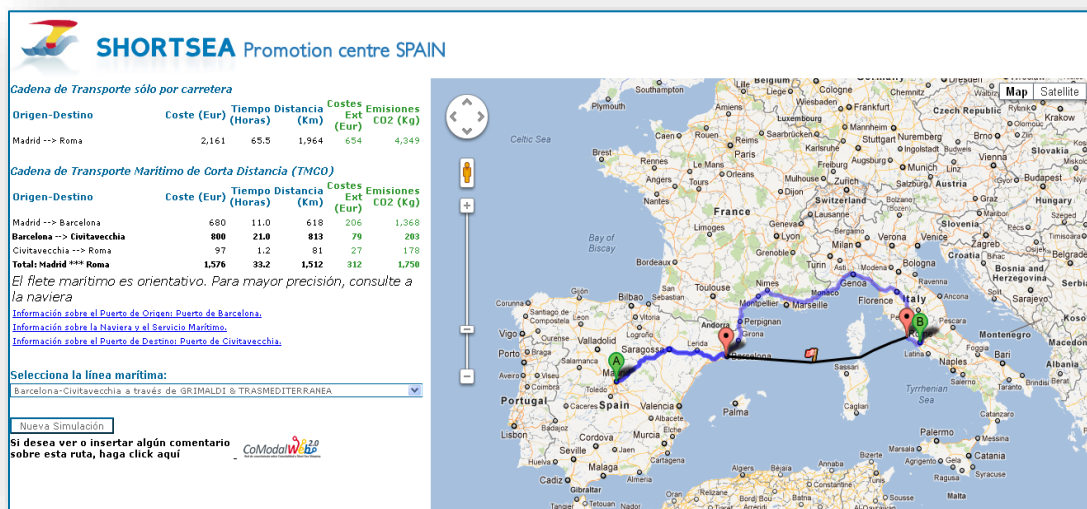
Seleccione qué líneas quiere consultar (Pulse CTRL para marcar más de una línea)

Select which lines you want to consult (Press CTRL key to select more than one line)

Barcelona ↔ Civitavecchia a través de Grimaldi
Barcelona ↔ Génova a través de Grandi Navi Veloci (GNV)
Barcelona ↔ Las Palmas & Tenerife a través de Flota Suardiaz
Barcelona ↔ Livorno a través de Grimaldi
Barcelona ↔ Rades a través de Compagnie Tunisienne de Navigation (CTN)
Barcelona ↔ Savona a través de Grimaldi

www.shortsea.es

The application compares the road-only transport chain with the one that uses a maritime section. The results are **displayed graphically**:



8 ACTION TO PROMOTE SSS AND MOTORWAYS OF THE SEA

PUBLIC INSTITUTIONS SUPPORT for the development of SSS, through an **ECO-INCENTIVE** programme, include it into the priorities of the European CEF program.

Approved and in progress for 2023-2026 period

SIMPLIFICATION AND SPEEDING UP of border goods **INSPECTION SERVICES** and customs formalities, and ensuring out-of-hours provision, to boost SSS potential with North Africa and the UK (Brexit).

FLEXIBILITY AND EFFICIENCY IN THE PORT SERVICE TO SSS in response to its very high number of calls per year: reduction of the freight tax, reduction of port services tariffs, improvement of the price/performance ratio of stowage, access to pilotage exemptions.

SUPPORT AND FACILITATE SSS VESSELS' COMPLIANCE with environmental objectives and regulations by providing European funding for investments to improve their environmental and energy efficiency.

Expected in the Sustainable and Digital Transport Support Programme of the PRTR

REITERATE IN THE IMO the desirability of a differentiated application of certain conventions to SSS in order to avoid counterproductive effects of environmental standards. At the national level, consult SPC Spain before supporting or ratifying new international conventions or amendments to existing ones.

PROMOTE THE IMPLEMENTATION OF THE M.A.N. OF ALTERNATIVE FUELS in maritime transport.

Expected in the Sustainable and Digital Transport Support Programme of the PRTR

MAINTAIN in the Transport Training Aid Program, the **TRAINING** related to Maritime Intermodality, and **ADAPT** it to the new needs.

IMPROVING ACCESSIBILITY and connectivity to SSS and MoS terminals and ports, implementation of specific marking and paperless access control technologies.



Short Sea Promotion
Centre Spain

Cronos Street, 63, 3^a Floor, Office 6

Tel: +34 91 304 13 59

Fax: +34 91 327 41 99

www.shortsea.es

info@shortsea.es