

# Brexit Planning

**Portsmouth**  
INTERNATIONAL  
**Port**

**James Evans**

*Duty Port Operations Manager*

## Key Facts

- Owned by Portsmouth City Council, UK's most successful municipal port
- Ideal location - direct access UK motorway network, 90 minutes travel time to London
- 2<sup>nd</sup> busiest cross channel port – 2 million passengers/year
- Operates cruise/Ro-Ro terminal and commercial cargo terminal (Portico)
- 66 acre site comprising the port & Portico
- £30 million invested in ambitious transformation plan

**£189m**

contribution to Portsmouth City Council area

**5,590**

UK Jobs supported

**2,410**

Jobs supported by PIP in the Portsmouth City Council area.

**£700m**

value of non-EU trade

**£390m**

contribution to national economy



**3.9m**

tonnes of goods handled at the port

**3RD LARGEST INTERNATIONAL SHORT SEA PASSENGER PORT IN THE UK**

**80%**

of trade EU and Channel Islands



vital outlet for goods to Channel Islands

**2<sup>nd</sup>**

largest port by volume on the South Coast



## Brexit

31<sup>st</sup> December 2020 (2300 GMT) = end of transition period

- Full ‘third country’ requirements for exports to the EU from 01.01.21
- Changes to customs requirements from 01.01.21
- Introduction of ‘Easements’ by UK Government to maintain free flow of imported goods from 01.01.21 to 01.07.21
- Border Control Post required for: live animals, plants and products of animal origin by 01.07.21





## Changes to UK Customs

- Between 1st January and 1st July 2021, Portsmouth International Port will transition to the Goods Vehicle Movements System (GVMS) and Temporary Storage operating models
- The port will remain listed on the Europa 'Customs Office List'
- Goods movements under the Common Transit Convention will require additional checks on site at a newly established 'Public Counter' and the 'International Trade Officers' of Border Force will conduct its functions.
- Transit Accompany Documents (TADs) can be processed at the Port by Border Force.
- In-house customs agency has been established at Portico

**PORTICO**  
CUSTOMS

# PORTICO

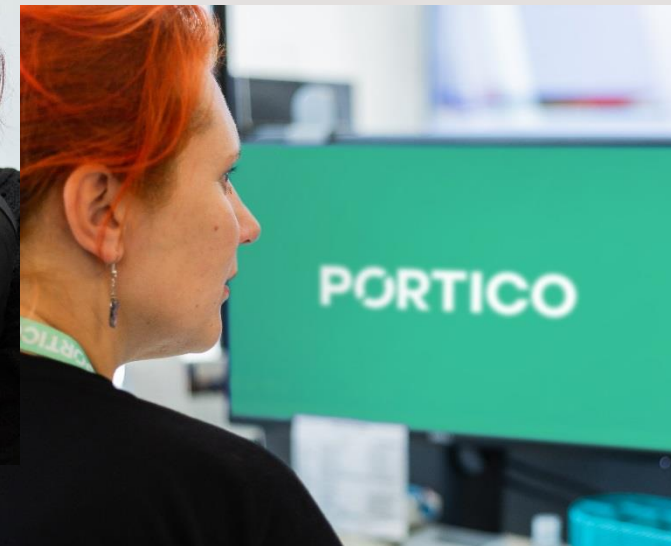
- An established independent and experienced customs agency.
- Direct links to HMRC across all major UK ports with the necessary Community System Providers. No additional system set up required.
- A Comprehensive Export Declaration service. Able to complete electronic NES and NCTS declarations.
- Have increased staffing levels for BREXIT
- AEO accredited

**Portico Customs**

023 9285 1495

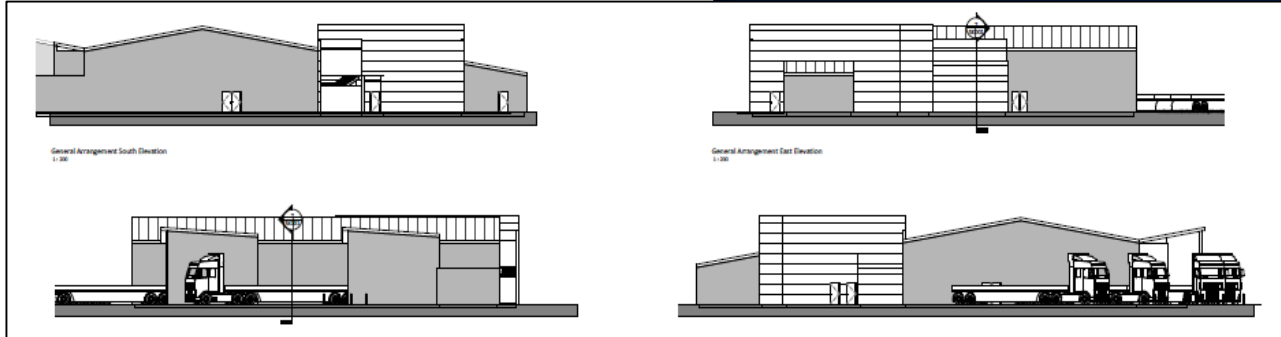
[customs.agency@porticoshipping.com](mailto:customs.agency@porticoshipping.com)

[www.porticoshipping.com](http://www.porticoshipping.com)



# New Border Control Post 'BCP'

For the 1<sup>st</sup> July 2021, two full new-build facilities will be constructed and split across the ro-ro and cargo terminals of the port



## Live Animals facility

- 2 bays with associated pens and inspection areas
- Additional parking for units awaiting clearance

## Plants, POAO facility

- 14 loading bays with 20 cold stores,
  - 24/7 Operation
  - 50+ units/day physically checked
- Operated by Portico Shipping under Port Health direction



## Planning for additional volumes of traffic

### Stakeholder Involvement:

- Police
- Ambulance
- Fire
- Councils
- Health
- Environment Agency

### Stakeholder Engagement:

- Hauliers
- Ferry operators

- *Identified as a major UK Port, Portsmouth International Port provides critical freight link for the UK.*
- *Serves routes to France, Spain, and the Channel Islands (95% of all goods to the latter)*
- *The port is on the main arterial route into the centre of the City of Portsmouth. Any delays to HGV traffic risks an unacceptable impact to residents, businesses and freight flows*



# Operation Transmission

- Is a multi agency road network congestion plan to keep the road network moving well for the majority, by working with hauliers to ensure plans are in place so that lorries do not get to the Port Gate in Portsmouth without the correct paperwork and thereby back up onto & disrupt the local road network.
- Short stay 'triage' sites, rather than lorry parks as seen in other areas of the country, to facilitate checks to ensure lorries are border-ready.
- Lorries that are border-ready proceed to the port for final processing/embarkation. Those not border-ready expected to be short stay visitors and held at triage sites.
- Triage locations separated across a number of key geographical sites
- Provide fluid movement for continuation of 'business as usual'



# Overview Map

## PORTSMOUTH AND SURROUNDING AREA HIGHWAY NETWORK

## OPERATION TRANSMISSION



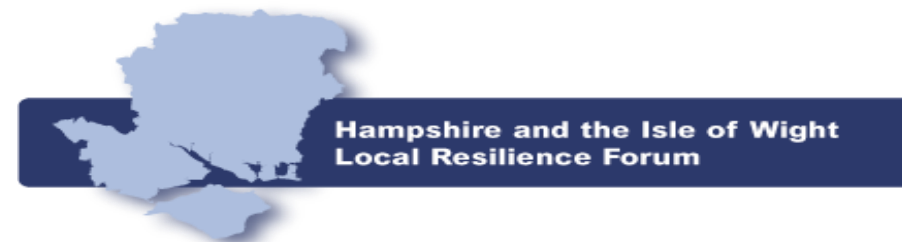
# Portsmouth Port Arrangements

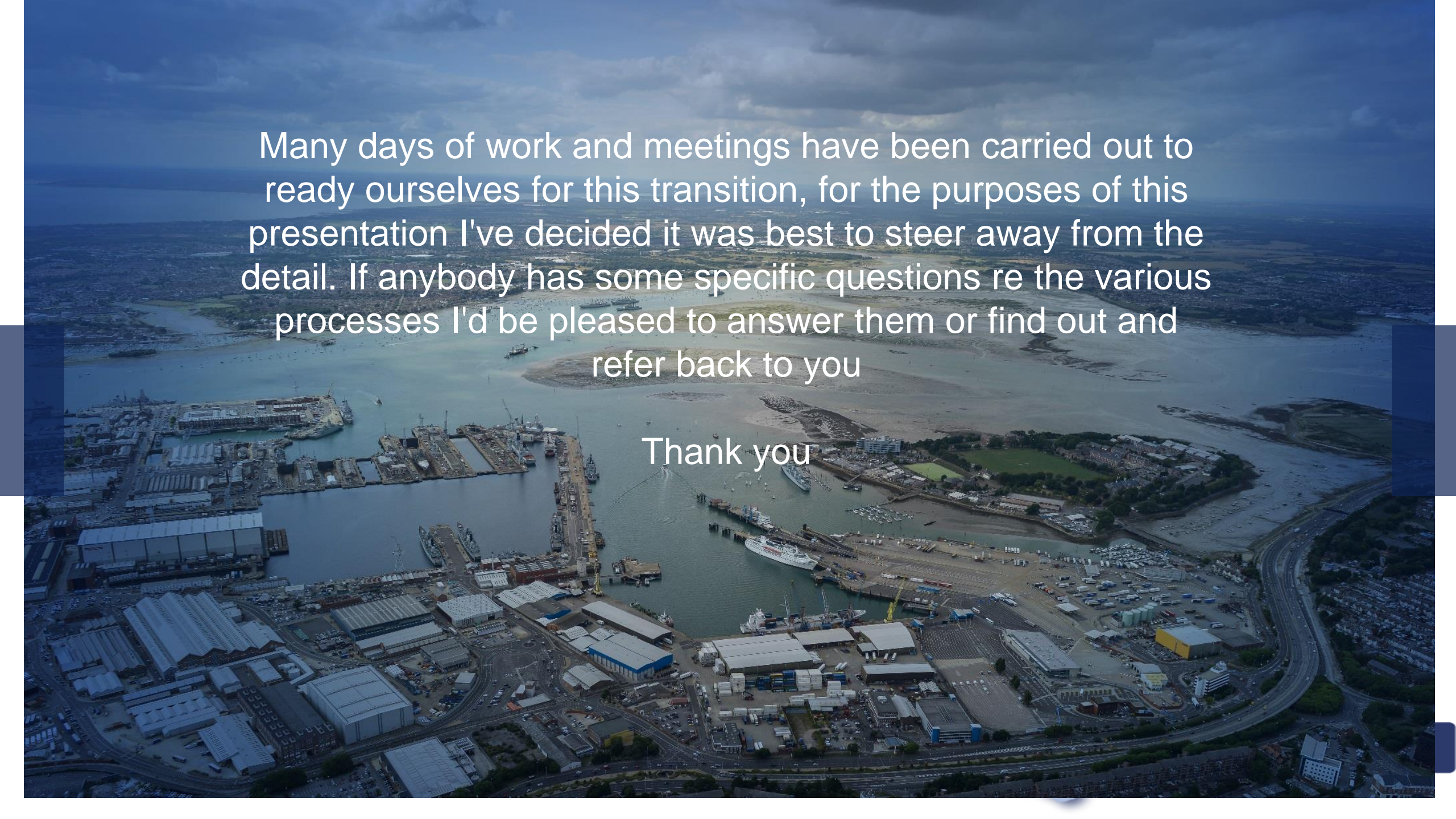
EU bound freight (including unaccompanied trailers) will only be permitted to enter the port if:

- **The vehicle has a valid Operation Transmission pass, or**
- **The vehicle is a pre-notified ‘special load’**

**All other EU bound freight vehicles WILL be turned away from the port for**

**Border-ready checks.**



An aerial photograph of a large industrial port facility, likely a shipyard or refinery, situated along a wide river or estuary. The facility features numerous large, white-roofed industrial buildings, extensive parking lots filled with vehicles, and several large cranes. Several large ships are docked at the piers. The surrounding area includes residential neighborhoods and a multi-lane highway. The sky is overcast with grey clouds.

Many days of work and meetings have been carried out to ready ourselves for this transition, for the purposes of this presentation I've decided it was best to steer away from the detail. If anybody has some specific questions re the various processes I'd be pleased to answer them or find out and refer back to you

Thank you